

## ENGINEERING STANDARDS

Rosedale Products, Inc.  
3730 West Liberty Road  
Ann Arbor, MI 48103

Service Bulletin  
pvdf-cpvc basket  
bulletin.wpd



Issue Date: 13Feb2004  
Revision:  
Revision Date:

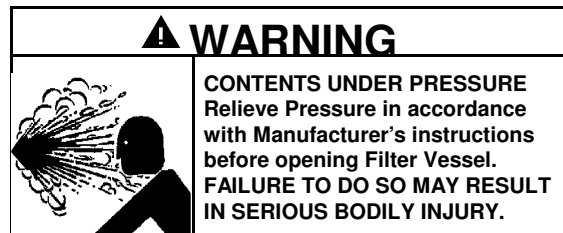
Specification No.  
**7.5.13**  
PAGE: 1 of 2

### SPECIAL CPVC/PVDF ABW BASKET INSTALLATION INSTRUCTIONS

#### Installation Instructions

Prior to installing the special CPVC/PVDF basket components, verify that the filter housing has been installed according to the Rosedale Products **Installation, Operation and Maintenance Manual** shipped with the filter housing.

**Step 1.** Make sure filter housing is de-pressurize and drained. Loosen the three eye-nuts on the cover of the housing and swing them free of the cover.



**Step 2.** Lift the cover and air pipe (24 inches long on bottom of cover) out of housing and set aside.

**Step 3.** Install basket **V-Seal** in basket collar for reverse flow direction. (See diagram)

**Step 4.** Place **Basket Flange Adapter** into filter housing, making sure the basket adaptor flange is firmly seated on top of the basket collar.

**Step 5.** Install the **ABW Outer Basket** (PVDF), making sure the basket is firmly seated in the basket flange adapter.

**Step 6.** With the outer basket in the housing, insert the **Filter Bag** in the outer basket making sure filter bag ring is firmly seated into the basket collar. For best results, be sure filter bag is installed fully extended to the bottom of the basket.

**Step 7.** Check for any sharp edges on the **Inner Basket Assembly** prior to installation. Make sure there are no large wrinkles or folds in the filter bag, then carefully insert the INNER BASKET into the filter bag until it seats on top of the filter bag ring.

## ENGINEERING STANDARDS

Rosedale Products, Inc.  
3730 West Liberty Road  
Ann Arbor, MI 48103

Service Bulletin  
pvdf-cpvc basket  
bulletin.wpd



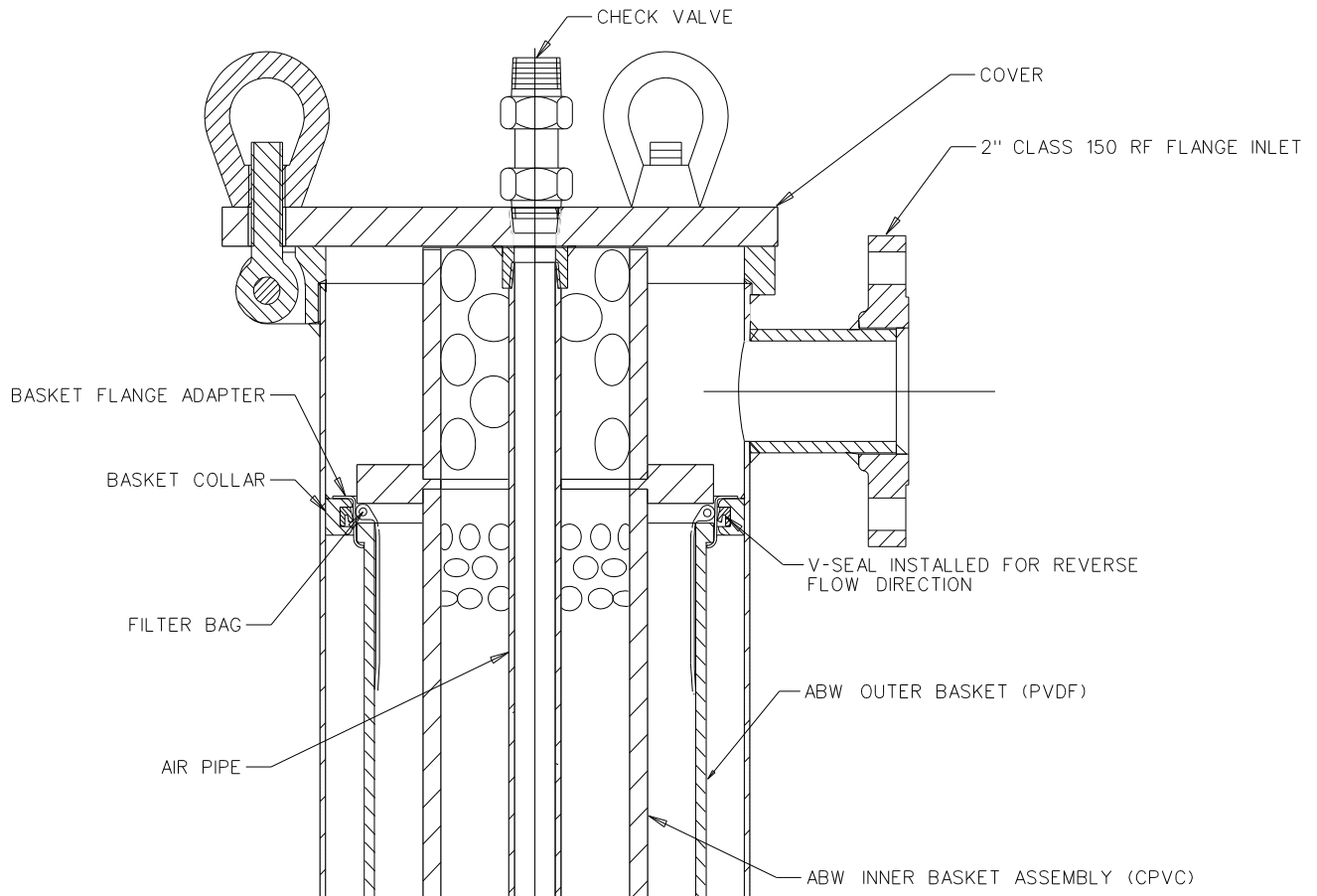
Issue Date: 13Feb2004  
Revision:  
Revision Date:

Specification No.  
**7.5.13**  
PAGE: 2 of 2

### SPECIAL CPVC/PVDF ABW BASKET INSTALLATION INSTRUCTIONS

**Step 8.** Before replacing cover assembly, inspect cover seal gasket (replace as necessary). Place cover and air pipe assembly in housing being careful not to damage filter bag with air pipe. Swing eyenuts onto cover and alternately tighten the three clamp assemblies evenly to ensure a leak proof seal between the cover and housing body. The recommended torque value for 5/8"-11 closure assemblies is 150<sup>ft-lbs</sup>.

#### SPECIAL CPVC/PVDF ABW BASKET INSTALLATION



Refer to the **Installation, Operation and Maintenance Manual** shipped with the filter housing for purging and starting the filter housing.