

ENGINEERING STANDARDS

Rosedale Products, Inc.
3730 West Liberty Road
Ann Arbor, MI 48103

IOM
7_6_5 QAC Style
Closure.wpd
n:iom\



Issue Date: 08FEB02
Revision: 2
Revision Date: February 18, 2003

Specification No.
7.6.5
PAGE: 1 of 9

INSTALLATION, OPERATION, & MAINTENANCE MANUAL

INSTALLATION, OPERATION AND MAINTENANCE MANUAL

ROSEDALE PRODUCTS, INC.



MULTI-BASKET STRAINER & MULTI-BAG FILTER WITH "QAC" STYLE CLOSURE

150 PSIG RATED FILTER UNIT

Table of Contents

I.	Installation	2
II.	Operation	3
III.	Maintenance	4
IV.	Spare Parts List	5
V.	Spare Parts Diagram	6
IV.	Standard Filter Housing Styles	7

ENGINEERING STANDARDS

Rosedale Products, Inc.
3730 West Liberty Road
Ann Arbor, MI 48103

IOM
7_6_5 QAC Style
Closure.wpd
n:iom\



Issue Date: 08FEB02
Revision: 2
Revision Date: February 18, 2003

Specification No.
7.6.5
PAGE: 2 of 9

INSTALLATION, OPERATION, & MAINTENANCE MANUAL

I. Installation

Please remove all shipping and crating materials carefully. Be sure to remove the plugs from the inlet and outlet openings. Dispose of all crating materials safely.

After positioning the Multi-Basket Filter into its proper location, secure the (4) support legs to the floor or platform. Provided on each support pad is a mounting hole to allow positive attachment to the base.

The Multi-Basket Filter is now ready for connection to the system. The inlet service line should be connected to the inlet flange. It is very important to identify which flange is the inlet side of the Multi-Basket Filter unit. The inlet side of the unit consists of a riser pipe which carries the fluid from the inlet flange to the top of the housing, above the basket retainer plate (see spare parts diagram for part identification). Connect the outlet service line to the outlet flange.

There are (2) 1/2" NPT ports on the cover of your Multi-Basket Filter unit. The center cover port is intended for a vent and comes standard with 1/2" ball valve. The 2nd port can remain plugged or used for a pressure gauge or special fitting as your application requires.

There are (2) NPT drains located on the inlet and outlet of the housing. These ports allow complete drainage of the filter housing including the inlet riser.

Some applications require special procedures for proper installation such as electrical grounding, pressure relief valves, flow by-pass systems, etc.. Please consult with specialists regarding your specific needs.

After completing installation be sure to double check connections for integrity. Your Multi-Basket Filter unit has been factory pressure tested leak free, therefore, any seepage problems usually occur from improper installation connections.

You are now ready to install the filter basket and bag (if applicable). Be sure flow from the inlet and to the outlet (if required) are closed. Lower safety valve handle to the service (horizontal) position. Pull clamp handle to the fully open position while lifting the 2nd stage safety pin. Raise housing cover to the open position. Raise bag hold down assembly away from basket plate to gain access to strainer baskets and/or filter bags.

The next step is to install the strainer or filter bag basket. If you've ordered the strainer basket option. A basket seal is utilized which prevents unfiltered liquid from by-passing the basket.

If your installation requires a filter bag, insert bag into the bag basket making sure filter bag ring is firmly seated inside the basket retainer plate opening. No basket seal is necessary when a filter bag is used. For best results, be sure filter bag is installed fully extended to the bottom of the basket.

Lower bag hold down assembly.

Before replacing cover assembly, inspect cover seal (replace as necessary). Close cover and pull clamp handle to the fully closed position while lifting the 2nd stage safety pin. Raise safety valve handle to the operating (vertical) position.

Your Rosedale Multi-Basket Filter unit is now ready for operation!

II. Operation

ENGINEERING STANDARDS

Rosedale Products, Inc.
3730 West Liberty Road
Ann Arbor, MI 48103

IOM
7_6_5 QAC Style
Closure.wpd
n:iom\



Issue Date: 08FEB02
Revision: 2
Revision Date: February 18, 2003

Specification No.
7.6.5
PAGE: 3 of 9

INSTALLATION, OPERATION, & MAINTENANCE MANUAL

Filter System Start-Up Procedure:

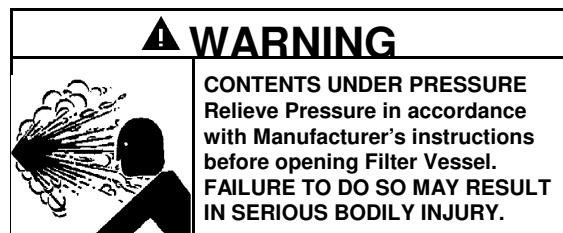
Prior to turning on the flow to the inlet service, please make the following checks:

1. Check inside filter unit to be sure baskets and filter bags (if applicable) are in housing and do not require cleaning or replacement. If necessary install clean filter baskets and bags (if applicable).
2. Check that filter unit cover is securely fastened to housing (see page 1). You are now ready to open the flow to the inlet service line. Slowly open the inlet service line approximately 25% of normal operational flow (open slowly as not to displace filter bag inside the housing). After filter unit is pressurized and trapped air is vented, slowly open outlet service line valve until completely open. Complete opening of inlet service line until desired flow rate is reached.

Once the desired service flow has been established, the filter will operate efficiently until dirty. With the standard filter basket no more than *15 PSI Differential Pressure* through the filter should be attained (higher differential baskets can be specially ordered). Operating the filter unit with a high differential may cause filter bags to rupture and/or cause damage to filter system or downstream equipment.

To prevent excessive drop through the filter unit, regular inspection of the filter media is required. Monitoring of differential pressure through the housing can be utilized as a means of determining whether or not the filter media needs cleaning or replacement. When it becomes necessary to clean or replace filter media, follow the procedure outlined below:

1. First close the flow from the inlet service line.
2. Close the flow to the outlet service line. (In some applications closing flow to outlet is not required.)
3. Relieve the pressure from the filter unit.



4. Purge fluid for media removal. Rosedale Products recommends a complete evacuation of fluid from vessel to aid in media removal.
 - 4.a For complete evacuation of fluid (from housing), open valve on the outlet or bottom drain and blow down fluid with pressurized air (5 psi max.) this will remove the majority of the fluids from the housing. When system has been evacuated, discontinue use of pressurized air blow down, lower safety valve handle to the service (horizontal) position and open cover valve.
 - 4.b For partial evacuation of fluid (down to basket plate level), lower safety valve handle to the service (horizontal) position and open cover valve until fluid stops flowing from safety valve.
5. Open cover by pulling clamp handle to the fully open position while lifting the 2nd stage

ENGINEERING STANDARDS

Rosedale Products, Inc.
3730 West Liberty Road
Ann Arbor, MI 48103

IOM
7_6_5 QAC Style
Closure.wpd
n:iom\



Issue Date: 08FEB02
Revision: 2
Revision Date: February 18, 2003

Specification No.
7.6.5
PAGE: 4 of 9

INSTALLATION, OPERATION, & MAINTENANCE MANUAL

- safety pin. Raise housing cover to the open position. Raise bag hold down assembly away from basket plate to gain access to strainer baskets and/or filter bags.
6. Remove filter basket and clean thoroughly, remove the filter bag (if applicable) and dispose of properly.
 7. Remove debris and sludge from inside of bag/basket sealing surface and O-ring groove to avoid interference with cover seal or flow of fluid being filtered.
 8. Install clean filter basket and filter bag (if applicable). Be sure filter bag is seated inside the basket retainer plate. Lower bag hold down assembly.
 9. Inspect cover gasket for cuts or other signs of failure and make sure it is properly seated.
 10. Close cover and pull clamp handle to the fully closed position while lifting the 2nd stage safety pin. Raise safety valve handle to the operating (vertical) position.

Your Rosedale Multi-Basket Filter is now ready for operation. Refer to filter system start-up procedure.

III. Maintenance

Your Rosedale Products Multi-Basket Filter unit is equipped with a Quick Action Clamp style closure ("QAC") assembly. The "QAC" clamp assembly is designed with a 2 stage cam adjustment system. Adjusting the cams will change the circumference of the clamp ring and the clamping pressure.

1. Clamp pivot points should be lubricated periodically. Use light oil or grease per standard shop practice.
2. If clamp pressure needs to be adjusted, be sure to relieve pressure and purge fluids from housing by following the operation procedure, sections 1-4. Remove cam lock screw on clamp/handle assembly and rotate the cam adjustment ring to the next higher adjustment setting per Figure 1 view A/B, then re-install cam lock screw. Re-check clamp tightness.
3. Additional clamp adjustment may be achieved by rotating the secondary cam bushing on the clamp assembly and re-adjusting the primary cam. Adjust the cam adjusting ring (per paragraph 3) to position 1 per Figure 1 view A/B, remove retainer rings from lower hinge bar and remove lower hinge bar from assembly (see Figure 2). Remove upper hinge bar w/safety handle by pulling up and away from clamp assembly. Remove secondary cam screws, rotate secondary cam bushing 180 deg. (Secondary cam bushing offset hole will be farthest from clamp opening), re-assemble clamp mechanism and adjust per paragraph 3 using Figure 1 view C/D.

Note: Cam position 6, Figure 1, view A/B will have the same clamping force as cam position 7 Figure 1, view C/D.

If the cover does not maintain an open position, the cover spring box assembly may need to be adjusted by tightening the nut inside the bottom of the spring box assembly with a special adjustment socket. The spring box adjustment socket shall be purchased from Rosedale Products. (P/N 15-7851).

ENGINEERING STANDARDS

Rosedale Products, Inc.
3730 West Liberty Road
Ann Arbor, MI 48103

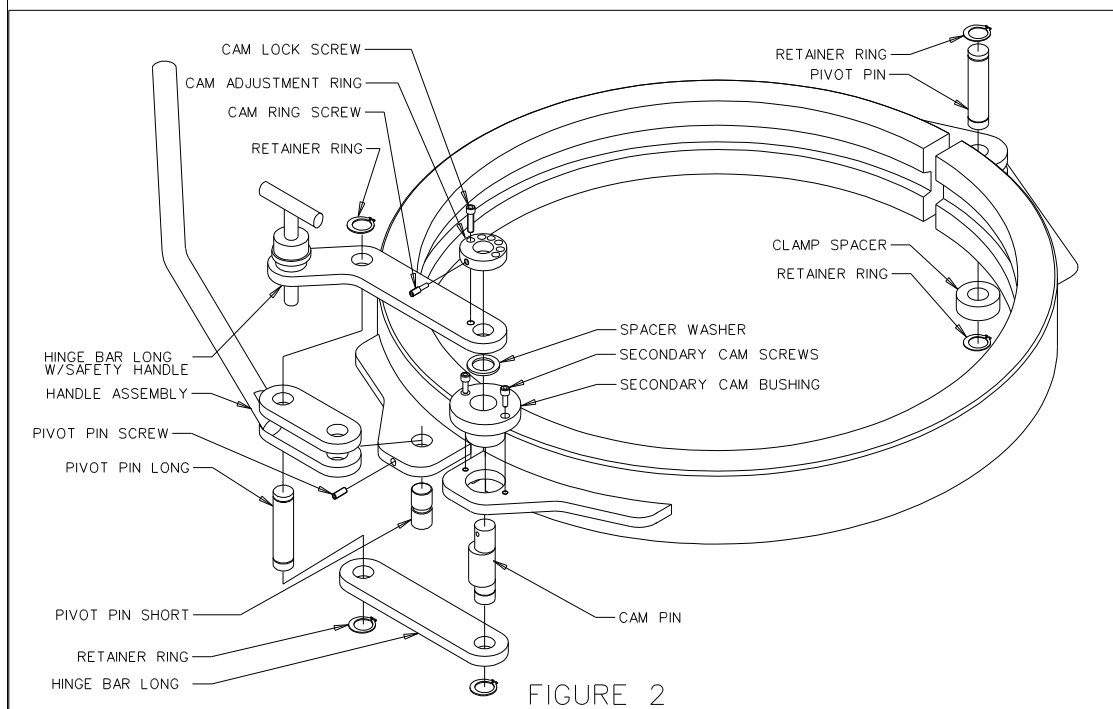
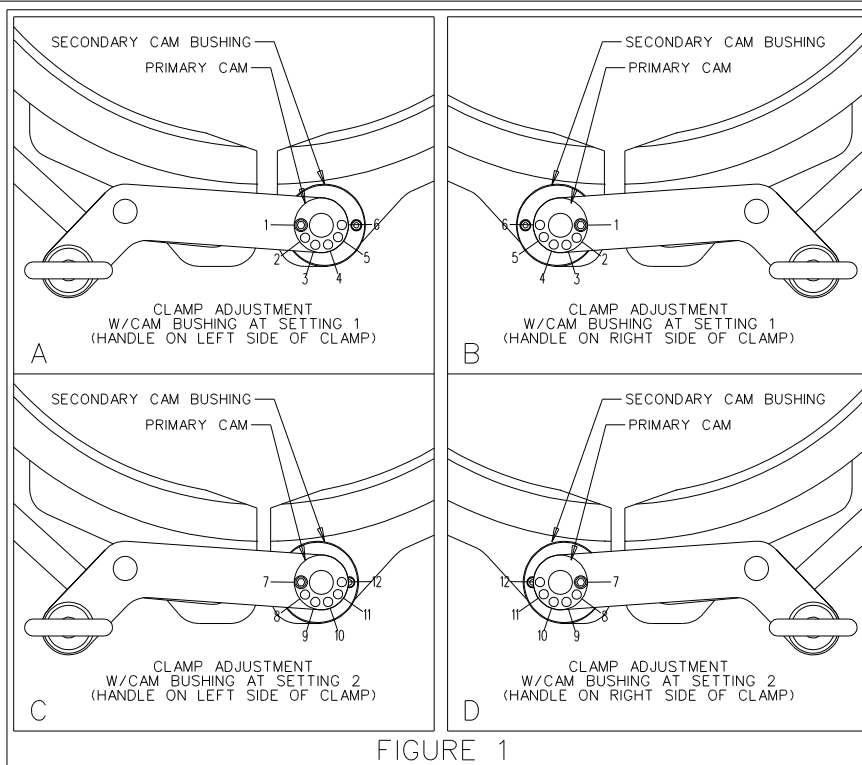
IOM
7_6_5 QAC Style
Closure.wpd
n:iom\



Issue Date: 08FEB02
Revision: 2
Revision Date: February 18, 2003

Specification No.
7.6.5
PAGE: 5 of 9

INSTALLATION, OPERATION, & MAINTENANCE MANUAL



ENGINEERING STANDARDS

Rosedale Products, Inc.
3730 West Liberty Road
Ann Arbor, MI 48103

IOM
7_6_5 QAC Style
Closure.wpd
n:iom\



Issue Date: 08FEB02
Revision: 2
Revision Date: February 18, 2003

Specification No.
7.6.5
PAGE: 6 of 9

INSTALLATION, OPERATION, & MAINTENANCE MANUAL

V. Spare Parts List

Your Rosedale Multi-Basket Filter unit will give you many years of reliable service provided periodic inspections are made of various components and replacement of worn parts are made promptly. The following is meant to be a recommended spare parts list, these parts are illustrated on the following page.

SPARE PARTS LIST			
Balloon	Description	Part Number	Time-Frame
1	Cover Seal	#150CG-* CART	as needed
2	Basket Seal	9BG-*	as needed
3	Filter Bag	(See Order)	as needed
4	Filter Basket	(See Order)	as needed

* Select Material Designation: B=Buna N
E=Ethylene Propylene
V=Viton
TEV=Teflon Encapsulated Viton
TSW=Teflon Solid White

Select Model Designation: 18-24

Rosedale Products does not anticipate the need to replace the clamp assembly or any of it's components for this filter housing. If for any reason any additional clamp components may be needed, please refer to the exploded view of the clamp assembly for the names of the item(s) needed.

ENGINEERING STANDARDS

Rosedale Products, Inc.
3730 West Liberty Road
Ann Arbor, MI 48103

IOM
7_6_5 QAC Style
Closure.wpd
n:iom\

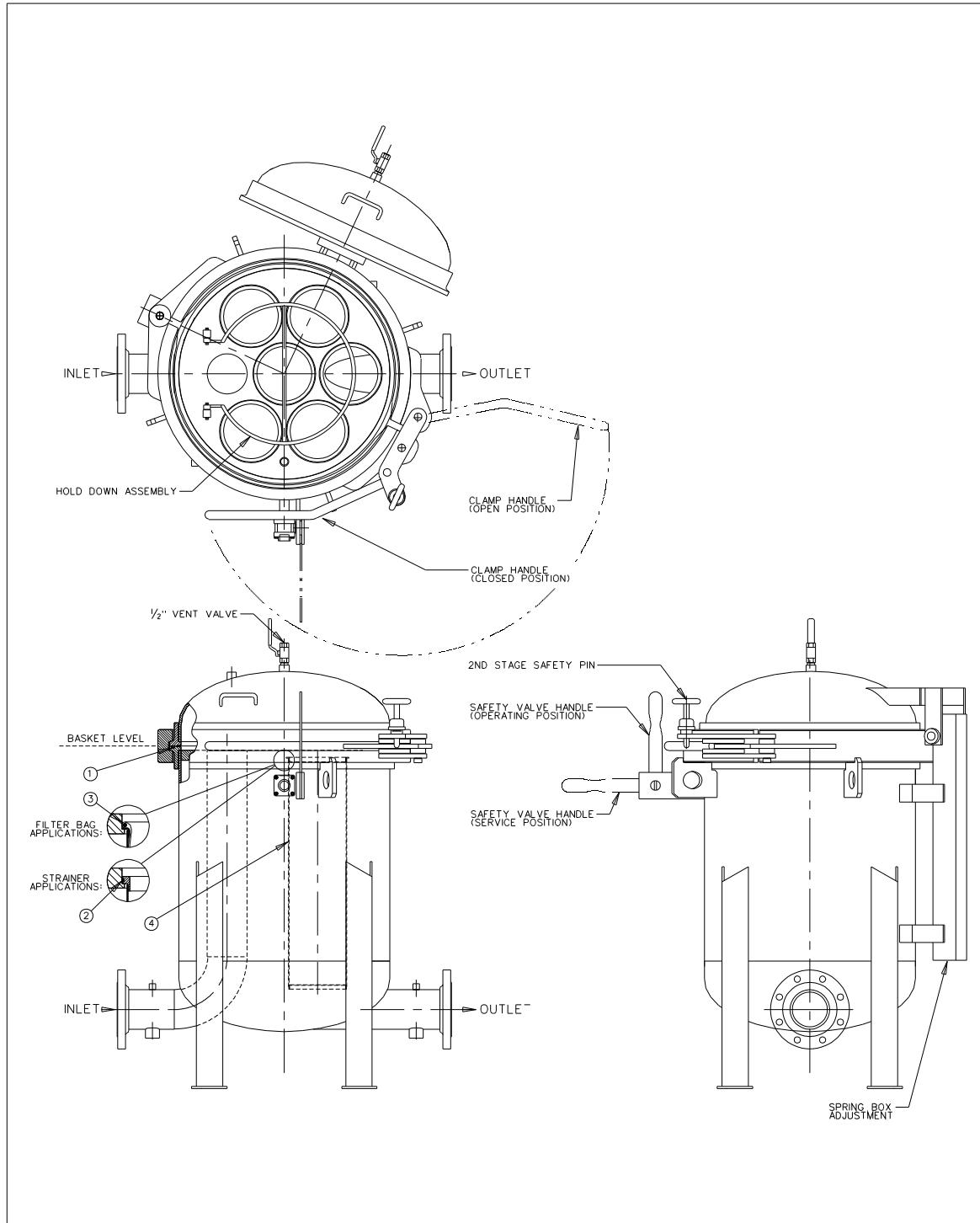


Issue Date: 08FEB02
Revision: 2
Revision Date: February 18, 2003

Specification No.
7.6.5
PAGE: 7 of 9

INSTALLATION, OPERATION, & MAINTENANCE MANUAL

V. Spare Parts Diagram



ENGINEERING STANDARDS

Rosedale Products, Inc.
3730 West Liberty Road
Ann Arbor, MI 48103

IOM
7_6_5 QAC Style
Closure.wpd
n:iom\

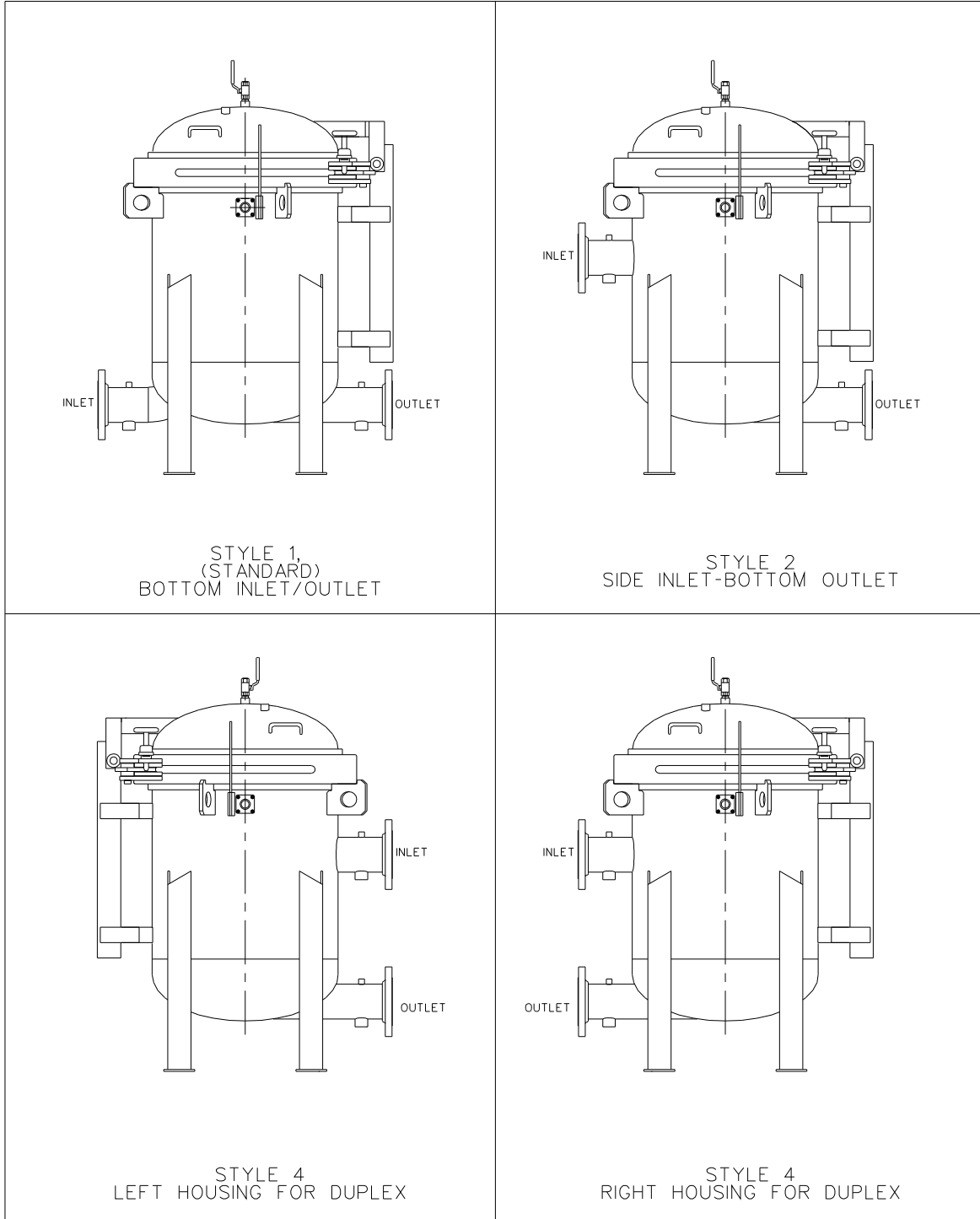


Issue Date: 08FEB02
Revision: 2
Revision Date: February 18, 2003

Specification No.
7.6.5
PAGE: 8 of 9

INSTALLATION, OPERATION, & MAINTENANCE MANUAL

VI. Standard Filter Housing Styles



ENGINEERING STANDARDS

Rosedale Products, Inc.
3730 West Liberty Road
Ann Arbor, MI 48103

IOM
7_6_5 QAC Style
Closure.wpd
n:iom\



Issue Date: 08FEB02
Revision: 2
Revision Date: February 18, 2003

Specification No.
7.6.5
PAGE: 9 of 9

INSTALLATION, OPERATION, & MAINTENANCE MANUAL

Important Notice

Warranty: In the event any Rosedale Products, Inc. filtration product is found to be defective in material, workmanship, or not in conformance with any express warranty for a specific purpose, Rosedale's only obligation and your exclusive remedy, shall be to repair, replace or refund the purchase price of such parts or products upon timely notification thereof and substantiation that the product has been stored, maintained and used in accordance with Rosedale's written instructions.

EXCLUSIONS TO WARRANTY: THIS WARRANTY IS EXCLUSIVE AND IS IN LIEU OF ANY IMPLIED WARRANTY OF MERCHANTABILITY, FITNESS FOR A PARTICULAR PURPOSE OR OTHER WARRANTY OF QUALITY, EXCEPT OF TITLE AND AGAINST PATENT INFRINGEMENT.

LIMITATION OF LIABILITY: Except as provided above, Rosedale shall not be liable or responsible for any loss or damage, whether direct, indirect, incidental, special or consequential, arising out of sale, use or misuse of Rosedale filtration products, or the user's inability to use such products.

THE REMEDIES SET FORTH HEREIN ARE EXCLUSIVE.

Rosedale Products, Inc.
3730 West Liberty Road
Ann Arbor, MI 48103 USA
734-665-8201
800-821-5373
Fax. 734-665-2214
Email: filters@rosedaleproducts.com
<http://www.rosedaleproducts.com>