

ENGINEERING STANDARDS

Rosedale Products Inc.
3730 west liberty Road
Ann Arbor, MI 48103

IOM
7_4_38 Model OT8/OT82
150.DOC
N:\IOM\



Issue Date: 22MAR12
Revision:
Revision Date:

Specification No.
7.4.38
Page 1 of 8

INSTALLATION, OPERATION AND MAINTENANCE MANUAL

INSTALLATION, OPERATION AND MAINTENANCE MANUAL

ROSEDALE PRODUCTS, INC.



**MODEL OT8/OT82
(OVER THE TOP HOUSING)**

150 PSIG RATED FILTER UNIT

Table of Contents

I.	Installation	2
II.	Operation.....	3
III.	Spare Parts List	5
IV.	Spare Parts Diagram.....	6

ENGINEERING STANDARDS

Rosedale Products Inc.
3730 west liberty Road
Ann Arbor, MI 48103

IOM
7_4_38 Model OT8/OT82
150.DOC
N:\IOM\



Issue Date: 22MAR12
Revision:
Revision Date:

Specification No.
7.4.38
Page 2 of 8

INSTALLATION, OPERATION AND MAINTENANCE MANUAL

I. Installation

Please remove all shipping and crating materials carefully. Be sure to remove the plugs from the inlet and outlet openings. Dispose of all crating materials safely.

The MODEL OT8/OT82 Filter unit is capable of having several different piping variations based upon the outlet style of your unit. The inlet service line should be connected to the inlet flange or NPT coupling located near the top of the unit.

The outlet service line should be connected to the outlet flange or coupling, located near the middle or bottom of the unit depending upon the style of your unit.

There are two 1/4" NPT ports on the cover and one 1/4" NPT port on the shell of the MODEL OT8/OT82 Filter unit. These ports can remain plugged or used for pressure gauges or special fittings as your application requires.

Some installations require electrical grounding of all equipment, be sure to provide adequate grounding where necessary.

After completing installation be sure to double check connections for integrity. Your MODEL OT8/OT82 Filter unit has been factory pressure tested leak free, therefore, any seepage problems usually occur from improper installation connections.

You are now ready to install the filter basket and bag. Remove cover by loosening the four cover eye nuts. The eye nuts should be loosened sufficiently to swing free. Pivot cover up and out of the way to access the basket.

The next step is to install the strainer or filter bag basket. If you've ordered the strainer basket option. A basket seal is utilized which prevents unfiltered liquid from by-passing the basket.

If your installation requires a filter bag, insert bag into the bag basket making sure filter bag ring is firmly seated inside the basket retainer plate opening. No basket seal is necessary when a filter bag is used. For best results, be sure filter bag is installed fully extended to the bottom of the basket.

Before replacing cover assembly, inspect cover and inlet seal gasket (replacing as necessary). Close cover and alternately tighten the four clamp assemblies evenly to ensure a leak proof seal between the cover and housing body. Torque closure assemblies to a maximum of 60-90^{ft-lbs}. Each installation may have different closure bolting torque requirements to effectively seal the filter vessel cover. Many installations require significantly lower closure bolting torque due to the variables explained below. The suggested torque values are for reference only. They are to be used as a guideline by maintenance personnel. These values are meant as a guideline for safe operation of the filter system at its maximum

ENGINEERING STANDARDS

Rosedale Products Inc.
3730 west liberty Road
Ann Arbor, MI 48103

IOM
7_4_38 Model OT8/OT82
150.DOC
N:\IOM\



Issue Date: 22MAR12
Revision:
Revision Date:

Specification No.
7.4.38
Page 3 of 8

INSTALLATION, OPERATION AND MAINTENANCE MANUAL

rated pressure. Many variables affect the torque required to operate the filter vessel without leaks. These variables include the diameter of the bolt, type and number of threads, material type and grade, condition of the nut bearing surface and lubrication of bolt threads and nut bearing surfaces. Other factors such as the condition of the o-rings, o-ring material, viscosity of the fluid being filtered, operating pressures, temperature, and the closure assembly tightening procedure must also be considered.

Your Rosedale MODEL OT8/OT82 is now ready for operation!

II. Operation

Filter System Start-Up Procedure:

Prior to turning on the flow to the inlet service, please make the following checks:

1. Check inside filter unit to be sure basket and filter bag (if applicable) are in housing and do not require cleaning or replacement. If necessary install a clean filter basket and bag (if applicable).
2. Check that filter unit cover is securely fastened to housing. You are now ready to open the flow to the inlet service line. Slowly open the inlet service line approximately 25% of normal operational flow (open slowly as not to displace filter bag inside the housing). After filter unit is pressurized and vented, slowly open outlet service line unit valve until completely open. Complete opening of inlet service line until desired flow rate is reached.

Once the desired service flow has been established, the filter will operate efficiently until dirty. However, under no circumstances should more than *15 PSI Differential Pressure* through the filter be obtained. Operating the filter unit with a high differential may cause filter bags to rupture and/or cause damage to filter system and downstream equipment.

To prevent excessive drop through the filter unit, regular inspection of the filter media is required. Monitoring of differential pressure through the housing can be utilized as a means of determining whether or not the filter media needs cleaning or replacement.

When it becomes necessary to clean or replace filter media, follow the procedure outlined below:

1. First close the flow from the inlet service line.
2. Close the flow to the outlet service line. (In some applications closing flow to outlet is not required.)
3. Relieve the pressure from the filter unit.

ENGINEERING STANDARDS

Rosedale Products Inc.
3730 west liberty Road
Ann Arbor, MI 48103

IOM
7_4_38 Model OT8/OT82
150.DOC
N:\IOM\



Issue Date: 22MAR12
Revision:
Revision Date:

Specification No.
7.4.38
Page 4 of 8

INSTALLATION, OPERATION AND MAINTENANCE MANUAL



4. Drain housing sufficiently to access filter basket.
5. Remove cover by loosening the cover eye nuts. Remove cover by loosening the four cover eye nuts. The eye nuts should be loosened sufficiently to swing free. Pivot cover up and out of the way to access the basket.
6. Remove filter basket and clean thoroughly, remove the filter bag (if applicable) and throw away. (Cleaning and reusing the filter bag is not recommended.)
8. Remove basket seal and inspect, replace if necessary. Clean basket seal groove and replace basket seal (see spare parts diagram for location of basket seal).
9. Install clean filter basket and filter bag (if applicable). Place the basket into the filter housing, make sure the basket flange is firmly seated into the basket collar. If applicable, insert bag into the bag basket making sure filter bag ring is firmly seated inside the basket flange. For best results, be sure filter bag is installed fully extended to the bottom of the basket.
10. Inspect cover gasket for cuts or other signs of failure and make sure it is properly seated.
11. Move cover back into position, and alternately tighten the four clamp assemblies evenly to ensure a leak proof seal between cover and housing body. Torque closure assemblies to a maximum of 60-90^{ft-lbs}. Many installations require significantly lower closure bolting torque due to the variables previously explained in Section I.

Your Rosedale MODEL OT8/OT82 Filter unit is now ready for operation. Refer to filter system start-up procedure.

ENGINEERING STANDARDS

Rosedale Products Inc.
3730 west liberty Road
Ann Arbor, MI 48103

IOM
7_4_38 Model OT8/OT82
150.DOC
N:\IOM\



Issue Date: 22MAR12
Revision:
Revision Date:

Specification No.
7.4.38
Page 5 of 8

INSTALLATION, OPERATION AND MAINTENANCE MANUAL

III. Spare Parts List

Your Rosedale MODEL OT8/OT82 Filter unit will give you many years of reliable service provided periodic inspections are made of various components and replacement of worn parts are made promptly. The following is meant to be a recommended spare parts list, these parts are illustrated on the following page.

SPARE PARTS LIST			
Balloon	Description	Part Number	Time-Frame
1	Cover Seal	8150CG-*	as needed
2	Inlet Seal	2-332	as needed
3	Basket Seal	8BG-*	as needed
4	Cover	OT8*150	as needed
5	Eye Nut	8ENNI	as needed
6	Rod End	8RENI	as needed
7	Clevis Pin Assembly	8CPNI	as needed
8	Filter Bag	(See Order)	as needed
9	Filter Basket	(See Order)	as needed
10	Tripod Legs	8T22*S	as needed

* Select Material Designation:

C=Carbon Steel
S=304 Stainless Steel
S316=316 Stainless Steel

B=Buna N
E=Ethylene Propylene
V=Viton
TEV=Teflon Encapsulated Viton
TSW=Teflon Solid White

ENGINEERING STANDARDS

Rosedale Products Inc.
3730 west liberty Road
Ann Arbor, MI 48103

IOM
7_4_38 Model OT8/OT82
150.DOC
N:\IOM\

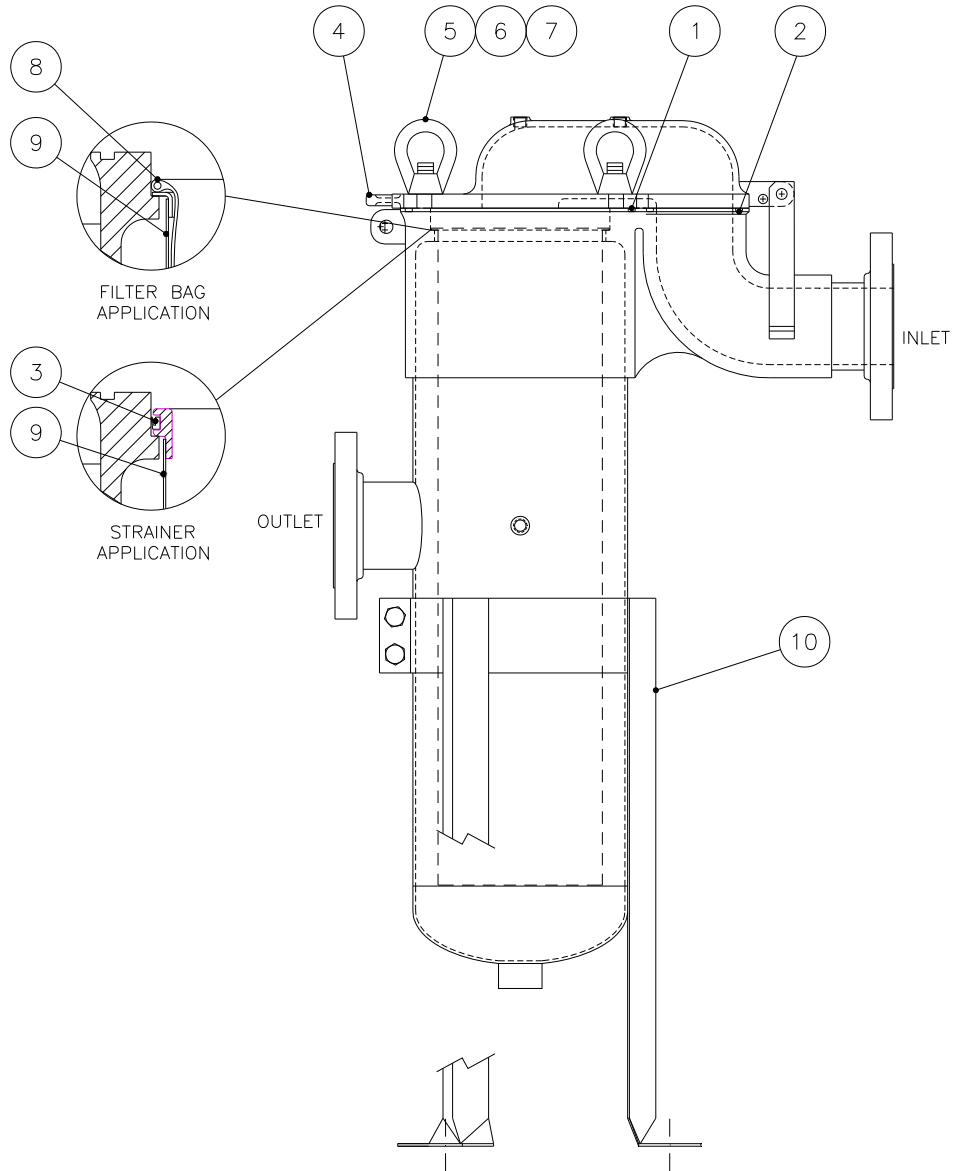


Issue Date: 22MAR12
Revision:
Revision Date:

Specification No.
7.4.38
Page 6 of 8

INSTALLATION, OPERATION AND MAINTENANCE MANUAL

IV. Spare Parts Diagram



MODEL OT8

ENGINEERING STANDARDS

Rosedale Products Inc.
3730 west liberty Road
Ann Arbor, MI 48103

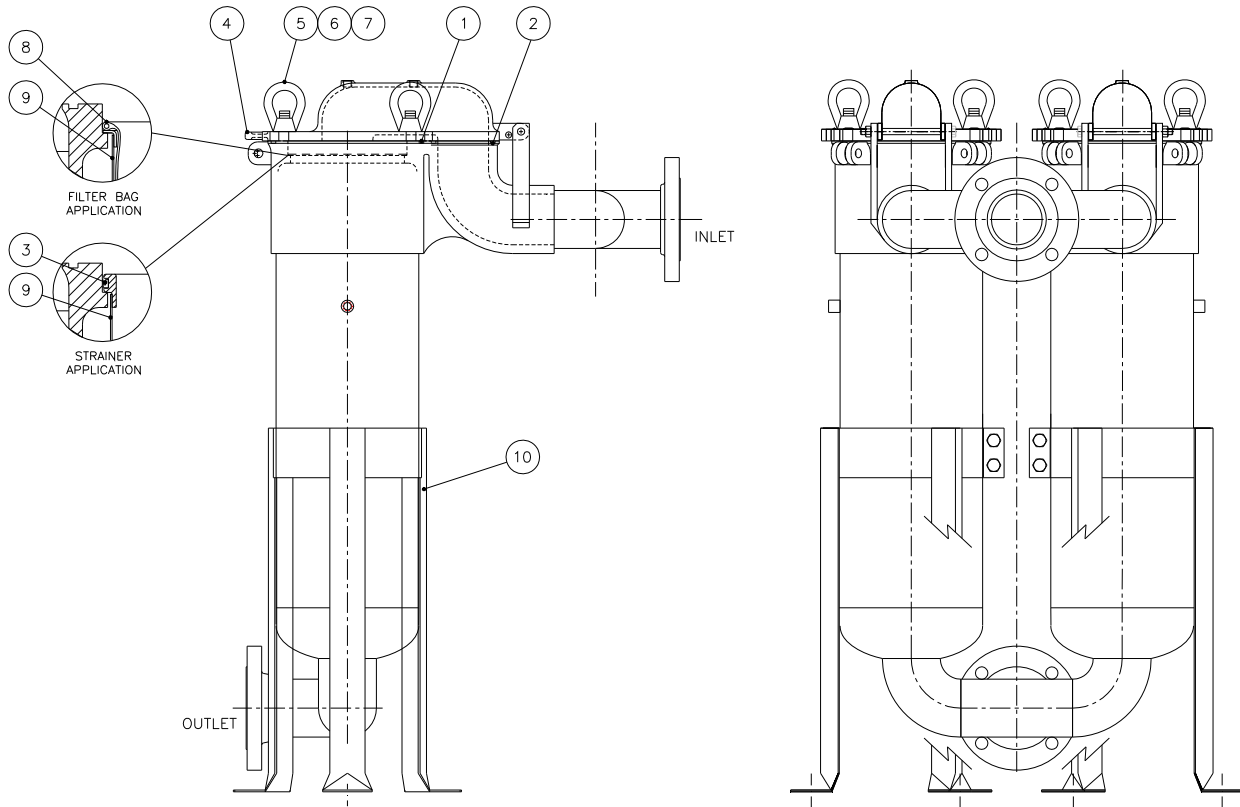
IOM
7_4_38 Model OT8/OT82
150.DOC
N:\IOM\



Issue Date: 22MAR12
Revision:
Revision Date:

Specification No.
7.4.38
Page 7 of 8

INSTALLATION, OPERATION AND MAINTENANCE MANUAL



MODEL OT82

ENGINEERING STANDARDS

Rosedale Products Inc.
3730 west liberty Road
Ann Arbor, MI 48103

IOM
7_4_38 Model OT8/OT82
150.DOC
N:\IOM\



Issue Date: 22MAR12
Revision:
Revision Date:

Specification No.
7.4.38
Page 8 of 8

INSTALLATION, OPERATION AND MAINTENANCE MANUAL

Important Notice

Warranty: In the event any Rosedale Products, Inc. filtration product is found to be defective in material, workmanship, or not in conformance with any express warranty for a specific purpose, Rosedale's only obligation and your exclusive remedy, shall be to repair, replace or refund the purchase price of such parts or products upon timely notification thereof and substantiation that the product has been stored, maintained and used in accordance with Rosedale's written instructions.

EXCLUSIONS TO WARRANTY: THIS WARRANTY IS EXCLUSIVE AND IS IN LIEU OF ANY IMPLIED WARRANTY OF MERCHANTABILITY, FITNESS FOR A PARTICULAR PURPOSE OR OTHER WARRANTY OF QUALITY, EXCEPT OF TITLE AND AGAINST PATENT INFRINGEMENT.

LIMITATION OF LIABILITY: Except as provided above, Rosedale shall not be liable or responsible for any loss or damage, whether direct, indirect, incidental, special or consequential, arising out of sale, use or misuse of Rosedale filtration products, or the user's inability to use such products.

THE REMEDIES SET FORTH HEREIN ARE EXCLUSIVE.

Rosedale Products, Inc.
3730 West Liberty Road
Ann Arbor, MI 48103 USA
734-665-8201
800-821-5373
Fax. 734-665-2214
filters@rosedaleproducts.com
<http://www.rosedaleproducts.com>