

R Introduction

In many applications, baskets are a good alternative to replace filter bags or other media. Basket design varies greatly depending on the application.



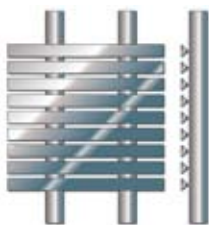
CONTENTS	PAGE
MEDIA CHARACTERISTICS	203
ROSEDALE CLEANABLE BASKETS	204
ROSEDALE REPLACEMENT BASKETS	206
TURN BAG HOUSING INTO CARTRIDGE FILTER	208
INNER BASKETS AND BAGS	210



FOR MORE INFORMATION GO TO www.rosedaleproducts.com/baskets.pdf or scan here:

Media Characteristics

This information is intended to be used as a general guideline. Since some characteristics are very similar from one media to the next, you should choose the media whose advantages best fit your particular filtration requirements. Consult Rosedale for assistance in selecting the proper media for your application.



Wedge Wire (W/W) or slotted, is the most durable of all backwashable media. They are strictly limited to .001" slot or 25 micron as the lowest retention rating. Wedge wire is particularly suited for critical low maintenance applications. As a result of their construction, they are used in many instances where manual cleaning is necessary but might damage other types of media.

MICRON RATING	OPENING (INCH)	% OF OPEN AREA
25	.001	2.1
50	.002	4.2
75	.003	6.1
150	.006	11.5
250	.010	18.0
350	.014	23.0



Poroplate® filter media is made from layers of stainless steel wire cloth diffusion-bonded together to form a rigid porous metal laminate structure. Poroplate filter media is corrosion resistant, cleanable, and can withstand high temperature applications up to 800°F. Micron ratings from 2 to 150 are available.

MICRON RATING	NOMINAL RATING	ABSOLUTE RATING
10	2μ	10μ
25	10μ	20μ
50	20μ	40μ
75	40μ	70μ
100	100μ	100μ
150	150μ	150μ

R Rosedale Cleanable Baskets

Replaces bag filters with multiple layers of stainless steel wire-woven cloth, diffusion bonded together for increased strength, corrosion resistance, and long life.

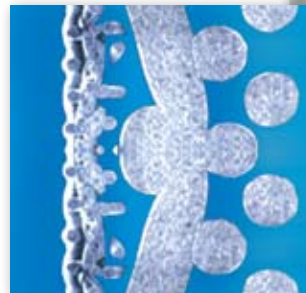
One piece construction for ease in handling, no need for a perforated basket for support, no need for a bag for filtration, basket becomes the filter media.

Sized to replace #1 or #2 bag filters and perforated strainer baskets.

FEATURES

- All 316 stainless steel construction
- 6 micron ratings
- 10-150 micron absolute
- TIG welded construction for long life
- Easily cleaned
- Additional end ring configurations to fit other liquid bag housings
- Custom applications available

See next page for How to Order.



Made from layers of stainless steel wire cloth, diffusion-bonded to form a rigid porous metal laminate structure.



Cone Baskets

Cone baskets are valuable when a large filtering area is needed in a small space. They are available as a basket within a basket, or a bag within a basket.

Cone baskets are widely used for filtration of solid particles in pharmaceutical, chemical, and food industries.

Please contact Rosedale for ordering information.



R How To Order

Build an ordering code as shown in the example

EXAMPLE: PPB - 2 - ROS - SB - 40

<p>MODEL NO. Cleanable Basket = PPB</p> <p>SIZE 6.5" Dia. x 13.04/13.38" = 1 6.5" Dia. x 24.85/25.19" = 2 Length varies depending on end fitting</p> <p>HOUSING MFG. Rosedale = ROS American Felt & Filter = AFF Filter Specialists = FSI GAF = GAF Hayward = HAY Krystil Klear = KK Loeffler = LOF Nowata = NOW Parker = PAR Plenty = PLE Purolator Facet = PFI Ronnington-Petter = RPA UF Strainrite = UFS</p>	<p>PRESSURE</p> <table border="0"> <thead> <tr> <th></th> <th>NOMINAL</th> <th>ABSOLUTE</th> </tr> </thead> <tbody> <tr> <td>10</td> <td>= 2μ</td> <td>10μ</td> </tr> <tr> <td>20</td> <td>= 10μ</td> <td>20μ</td> </tr> <tr> <td>40</td> <td>= 20μ</td> <td>40μ</td> </tr> <tr> <td>70</td> <td>= 40μ</td> <td>70μ</td> </tr> <tr> <td>100</td> <td>= 100μ</td> <td>100μ</td> </tr> <tr> <td>150</td> <td>= 150μ</td> <td>150μ</td> </tr> </tbody> </table> <p>FEATURES SB = Swing Bolt BC = Band Clamp Cover 1B = Single Bag Housing (Other Mfg.)* MB = Multi Bag Housing* <small>*Provide manufacturer's housing model number</small></p>		NOMINAL	ABSOLUTE	10	= 2μ	10μ	20	= 10μ	20μ	40	= 20μ	40μ	70	= 40μ	70μ	100	= 100μ	100μ	150	= 150μ	150μ
	NOMINAL	ABSOLUTE																				
10	= 2μ	10μ																				
20	= 10μ	20μ																				
40	= 20μ	40μ																				
70	= 40μ	70μ																				
100	= 100μ	100μ																				
150	= 150μ	150μ																				

R Rosedale Replacement Baskets

Rosedale manufactures replacement bag filter baskets and basket strainers for a wide range of filter housings made by:

American Felt & Filter
 Cuno
 Commercial Filters
 Eaton
 Filter Specialists (FSI)
 Filtration Systems
 GAF
 Ronningen-Petter
 Strainrite
 Oakland
 Plenty

We offer replacements for all current models, and any that have been discontinued by the original manufacturer.

These replacement baskets are made to specifications that equal, or exceed the original manufacturers specifications.

Basket Construction

STAINLESS STEEL: Standard material is 304 stainless steel. 316 stainless steel is available as an option.

Basket Media Selection

PERFORATED STRAINER AND BAG FILTER BASKETS: For cleanable basket strainers, choose from the following perforation diameters: 1/4, 3/16, 9/64, or 1/16 inch. For filter bag baskets: standard 9/64-inch diameter perforations with 51 percent open area are supplied.



Perforated



With wire mesh lining

PERFORATED WITH WIRE MESH LINING STRAINER AND FILTER BAG BASKETS:

Stainless steel wire is used in mesh sizes 30, 60, 100, 150, or 200. When used as a bag filter basket, the following advantages are realized:

- Fiber migration is minimized.
- In the unlikely event of bag rupture, the wire mesh contains the contaminant.
- Bag material cannot become "lodged" in the perforations due to extreme pressure differential.
- Flow characteristics are enhanced when using monofilament bags.



Model CF
 Replaces Commercial Filter baskets SB11, SB12



Model CU
 Replaces Cuno baskets 7PC1, 7PC2



Model RP
 Replaces Ronningen-Petter baskets 224, 324, 424, 152



Model AFF/GAF
 Replaces American Felt & Filter/GAF baskets 112, 122, AMS R, AMC R, NCX, RBX 1L, RBX 2L

R How To Order

Build an ordering code as shown in the example.

EXAMPLE: **FS1 - BM30 - S316**

BASKET MODEL NUMBER

Filter Specialists, Inc. = **FSR/FS/FSP**

American Felt & Filter = **AFF**

GAF = **GAF**

Strainrite = **STR**

Ronningen-Petter = **RP**

Filtration Systems = **FF**

Cuno = **CU**

Commercial Filters = **CF**

Oakland = **OA**

Plenty = **PL**

BASKET SIZE (approx., inches)

OD (nominal)	Length (nominal)	
7	15	= 1
7	30	= 2
4	6	= 3
4	12	= 4

BASKET TYPE

Perforated filter bag basket = **B**

Perforated strainer basket = **P**

Mesh lined perforated filter bag basket = **BM**

Mesh lined strainer basket = **M**

Heavy wire mesh filter bag basket = **HWM**

BASKET MEDIA SIZE

Perforation diameters (for P type baskets)*
1/4, 3/16, 9/64, 1/16

Mesh sizes (for BM and M baskets)
30, 60, 100, 150, or 200

OPTIONS

304 stainless steel construction = **S**

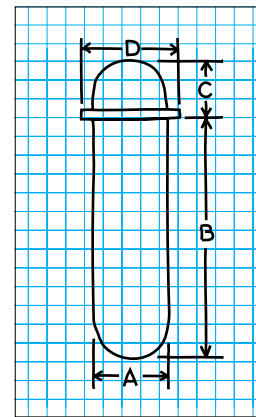
All 316 stainless steel construction = **S316**

*Additional options available. Consult factory.

Rosedale can manufacture any basket to your specifications.

Send us a drawing, or just a simple sketch as shown, and we'll submit a quote for your review.

- A = Basket diameter
- B = Basket height
- C = Bail height
- D = Outside diameter of rim

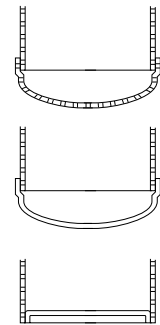


Basket Designs

Standard filter bag baskets have rounded perforated bottoms.

Mesh lined bag baskets have round solid bottoms.

Strainer baskets have flat non-perforated bottoms.



Model STR
Replaces Strainrite baskets UF1-90, UF1-180



Model FF
Replaces Filtration Systems baskets 112, 122



Model FSR



Model FS

Model FSR or FS
Replaces all Filter Specialists baskets

R Turn Bag Housings Into Cartridge Filters!

Basket holds cartridges inside a bag housing!

Rosedale's bag filter converter can be quickly converted to a cartridge filter. Simply put, there are applications that call for a bag filter and others that call for a cartridge filter. Until now, it wasn't very easy to change between the two.

If it becomes necessary to change from bags to cartridges – install the Rosedale Converter Basket.

- Remove the original basket
- Install the new converter basket
- Load the cartridges
- Unique design prevents clean side contamination by removing basket from housing before removing cartridges from converter

You now have a cartridge filter able to utilize any standard cartridge.

Baskets fit standard models 4-12, 8-15, and 8-30 housings. Construction materials are either 304 stainless or 316 stainless steel.



◀ Flow is introduced from above and circulates around cartridges. Fluid flows through cartridge walls, leaving contaminant on media, and "clean" fluid exits through bottom outlet.

R How To Order

Build an ordering code as shown in the example below

EXAMPLE: **BC1 - S**

BASKET CONVERTER = **BC** _____

BASKET SIZE (IN INCHES, NOMINAL)

OD	Length	
6.5	10	= 1 _____
6.5	20	= 2
4	10	= 4

CONSTRUCTION MATERIALS

304 Stainless Steel = **S** _____

316 Stainless Steel = **S316**



Dimensions

Housing Size & Cartridge Capacity	Model Code	OD*	Length*
Model 4 1 cartridge	BC4	4	10
Model 8 3 cartridges	BC1	6.5	10
	BC2	6.5	20

*Nominal in inches

See pages 190-191 for more information on Wound Cartridges and Stainless Steel filter cartridges.

R Inner Baskets and Bags

Model 8 and any of the multi-basket or multi-bag units can be fitted with smaller, inner basket strainers or bag filters, through which the in-coming fluid flows first, giving two-stage cleaning action. Inner baskets and bags are offered in the same construction materials and ratings as those of the primary outer elements.

